



# High Street

— CHAPELTOWN —



## WELCOME

Nestled on the cusp of Jumbles Country Park in the pretty village of Chapeltown, discover a stone-built cottage with a modern twist.

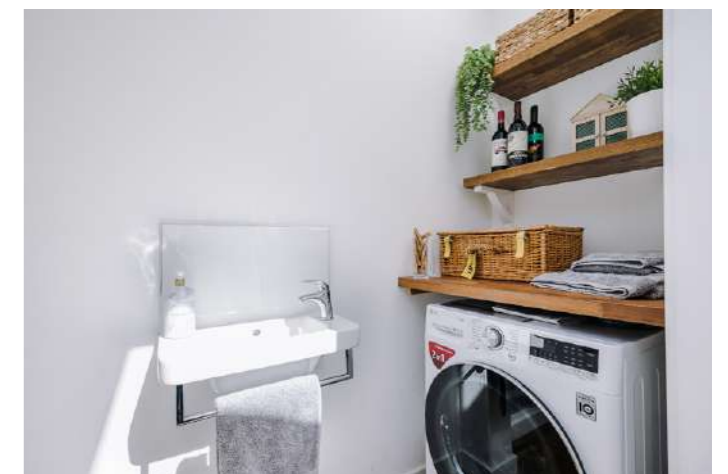
On-street parking is available outside this pretty mid-terrace cottage, where a Victorian-style street light casts illumination on the powder blue front door.

Make your way inside into the vestibule entrance, opening a part-glazed door immediately into the lounge, where engineered oak flooring extends underfoot. A bright and airy room, high ceilings and a large window to the front amplify the light. A log-burning stove sits upon a stone tiled hearth, nestled beneath a light-oak toned wooden lintel adding warmth to the ambience of the room. To either side of the chimney breast, alcoves provide space for bookshelves and side tables. Plenty of room in here for a comfortable sofa and armchair.

Beyond the lounge, drift through into the large, open-plan dining room-kitchen. White walls help amplify the light entering through the kitchen window to the rear, whilst the high ceilings retain an airy, open feel. Gather around the dining table and celebrate special occasions and Sunday dinners.

To the rear, the kitchen contains a central island and offers ample storage in the cabinetry that surrounds, with appliances including an integrated fridge and freezer, oven and microwave, electric hob beneath an extractor fan, dishwasher and Baxi boiler. There is also additional storage in the understairs cupboard from the dining room. A wide Belfast sink sits beneath a window overlooking the garden, inset within the wooden worktops.

From the kitchen, open a door into the utility room, with plumbing for washer and dryer and also housing the WC and wash basin.





## SUMMER SUNSHINE

Open the back door from the kitchen to enjoy dinner alfresco in the paved courtyard garden, where traditional stone walls soak up the warmth of the sunshine to provide a true suntrap. Embellish this pocket of paradise with an array of colourful planters brimming with scent and bring the laid-back pace of the Mediterranean to Chapeltown.

## AND SO TO BED...

Centrally set between the lounge and dining-kitchen, ascend the newly carpeted stairs to the first-floor landing, turning right into the first bedroom. Looking out over the rear, this newly decorated bedroom is dressed in shades of white and grey. Currently housing twin beds, this large double bedroom also features floating shelves, perfect for bedtime reading or displaying photos.

Continue along the landing, to arrive at the main bedroom, again featuring a variation on the motif of soothing greys and whites. With ample space for a king-size bed, high ceilings once more create an airiness, with large windows overlooking the front, fitted with blinds for privacy. A wall of seamlessly fitted wardrobes offers plenty of storage, a mirrored section aiding light flow for a bright and cheerful bedroom. Hotel chic abounds in this bedroom, right down to the iron press neatly concealed behind the door.

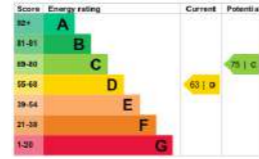
Refresh your senses in the family bathroom, underfoot vinyl slate grey effect flooring with stylish white metro tiling to the walls. Soak away your cares in the bath, fitted with overhead shower; there is also a wash basin, heated towel rail and WC.

Make your way up the second set of stairs to the uppermost level, where on the right a storage area is amply lit by a large overhead Velux on the landing. Turning left, emerge into the loft bedroom, converted by the owners to create a peaceful, private guest bedroom. Eaves cupboards house an abundance of storage, whilst this spacious double bedroom is well lit by a Velux window showering light down, framing starlit views at bedtime.



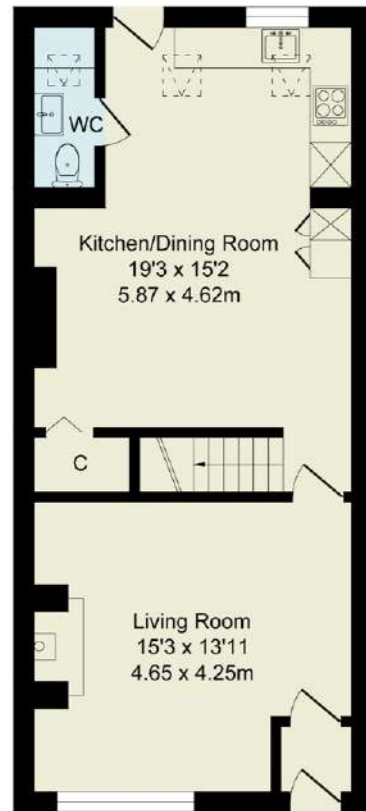
# High Street

— CHAPELTOWN —

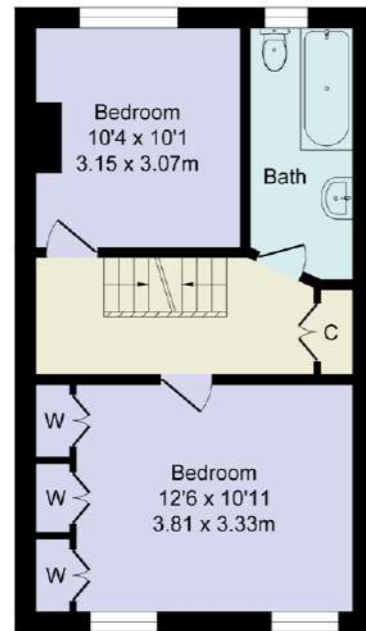


Total Approx. Floor Area 1197 Sq.ft. (111.2 Sq.M.)

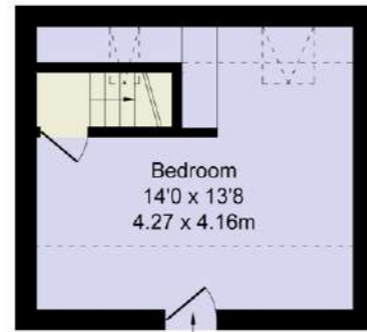
Surveyed and drawn by Lens Media for illustrative purposes only. Not to scale. Whilst every attempt was made to ensure the accuracy of the floor plan, all measurements are approximate and no responsibility is taken for any error.



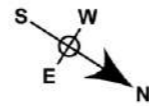
Ground Floor  
Approx. Floor Area 561 Sq.Ft (52.1 Sq.M.)



First Floor  
Approx. Floor Area 428 Sq.Ft (39.8 Sq.M.)



Second Floor  
Approx. Floor Area 208 Sq.Ft (19.3 Sq.M.)



## ON YOUR DOORSTEP

Step outside and discover all the delights of village living on your doorstep.

Awaiting its new owners, discover your local hostelry the Cheetham Arms only a few paces away over the road. Close by there are a number of other bars, restaurants and pubs to discover including The White Horse in Edgworth, The Courtyard Bar at Last Drop Village Hotel and Spa and the renowned Strawberry Duck, a welcoming country pub on the fringe of the Wayoh Reservoir walk. Jumbles Country Park is just a little down the road with all its birdwatching spots and delightful café.

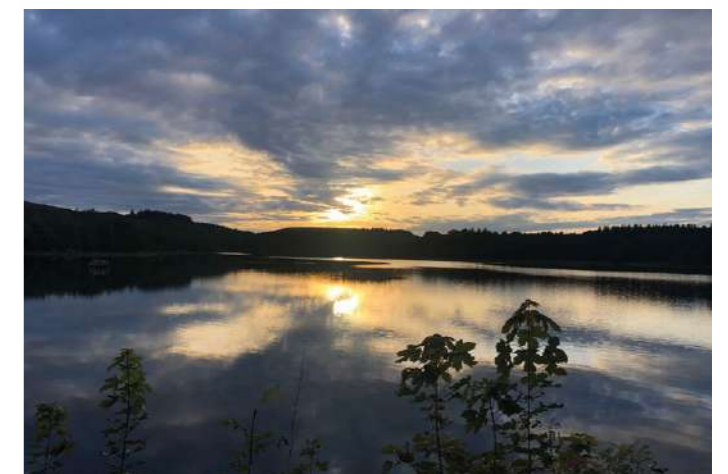
With walks in abundance on the doorstep, get back to nature and discover all the fantastic footpaths that crisscross the local countryside.

Families are perfectly placed, close to playgrounds and a range of sporting facilities including old Boltonians AFC, local historical landmark Turton Tower and Jumbles Sailing Club close by. Turton Golf Club is only a few minutes' drive away too.

Hawkshaw Village Shop is only ten minutes' drive away whilst Holden's Ice Cream and Village Store is less than five minutes' drive.

A range of primary and secondary schools are all within easy reach including Turton Edgworth C of E Primary School, Eagley Infants School, Turton School and Egerton Community Primary School.

For modern living in a peaceful village setting, book your viewing for No. 80, High Street, today.



# High Street

— CHAPELTOWN —

**WAINWRIGHTS**

ESTATE AGENTS

To view High Street

Call 01204 773556

Email: [sales@wainwrightshomes.com](mailto:sales@wainwrightshomes.com)